

Crosby® Grommet Shackle

Load Rated®



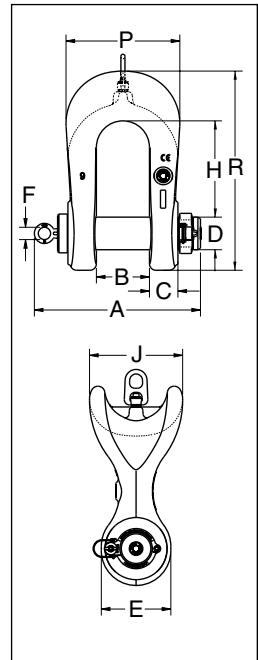
APPLICATION INSTRUCTIONS
SEE PAGE 89 OF THE GENERAL CATALOG

G-2170 / S-2170 GROMMET SHACKLE



Scan our QR Code with your smart device to visit the online flyer.

- All sizes Quenched and Tempered for maximum strength.
- All sizes Cast alloy steel.
- Sizes 300 metric tons and smaller are proof tested to 2 times the Working Load Limit.
- 500 metric tons tested to 1.33 times the Working Load Limit.
- All ratings are in metric tons, embossed on side of bow.
- G-2170 bows are furnished Dimetcoated and pins are Dimetcoated, then painted red.
- S-2170 bows and pins are painted red.
- All sizes are RFID Equipped in bow and pin
- Designed for use with single or double large diameter grommets.
- Extra large sling contact area improves efficiency of the grommet sling.
- Utilizes new **Crosby Easy-Loc** shackle bolt system
- Large machined flat on ears that can be drilled and tapped for adapting other accessories.
- HR-1000 Hoist Ring in Bow standard for easy transporting
- Provides a bearing surface that is at least 5 times that of a round shackle.
- Increases usable sling strength minimum of 60% and greatly improves life of grommet slings.
- Bow and bolt are certified to meet charpy impact testing of 42 joules (31 ft-lbs.) min. ave. at -20 degree C (-4 degree F).
- All 2170 shackles are individually proof tested and magnetic particle inspected. Crosby certification available at time of order.
- Shackles requiring ABS, Lloyds, and other certifications are available upon special request and must be specified at time of order.
- All 2170 shackles can meet requirements of DNV Standard for Certification of Lifting Appliances upon special request and must be specified at time of order.
 - Serialization / Identification
 - Material Testing (Physical / Chemical / Charpy)
 - Proof Testing
- Look for the Red Pin®...the mark of genuine Crosby quality.



G-2170 / S-2170 Crosby® Grommet Shackles

Working Load Limit (t)*	Stock No.		Weight Each (kg.)	Dimensions (mm)										
	G-2170	S-2170		A	B +/- .02	C	D +/- .02	E	G	H	J	P	R	Effective Body Diameter
75	1022075	1022324	51.26	358	105	60.7	69.9	140	30.2	197	191	241	411	286
125	1022084	1022333	79.83	408	130	69.9	80.0	171	30.2	236	229	279	489	343
200	1022093	1022342	166.9	486	150	86.1	105	229	44.4	296	328	346	635	469
300	1022100	1022351	311.1	570	187	109	133	283	44.4	386	394	432	808	578
500	1022119	1022360	756.6	772	250	152	180	349	44.4	501	508	584	1053	762

* Sizes 75-300 metric tons are proof tested to 2 times the Working Load Limit. Ultimate Load is 5 times the Working Load Limit. 500 metric tons are proof tested to 1.33 times the Working Load Limit. Ultimate Load is 4.5 times the Working Load Limit.

For Working Load Limit reduction due to side loading applications, see page 91.